

This document describes the basic steps required in order to start working with the XVC encoder and decoder.

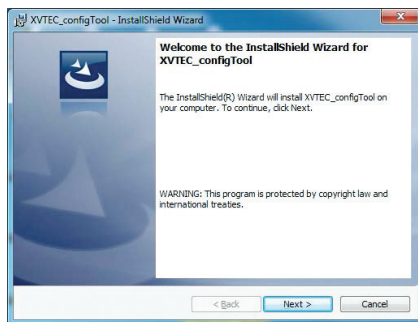
The minimum settings required are the network parameters.

Once set, the unit will be accessible through the web browser.

For additional procedures and information please refer to the XVC Encoder user manual.

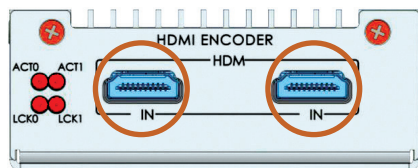
Step 1

Install the XVC management tool.
Follow the wizard instructions (Please download the configuration tool from www.xvtec.com/software-update/)



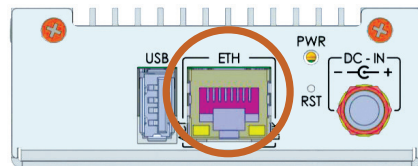
Step 2

Connect video sources to the unit (optional)



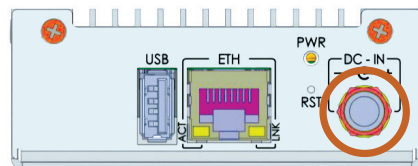
Step 3

Connect the Ethernet cable to the encoder



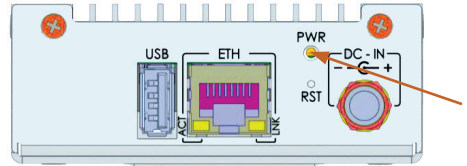
Step 4

Connect the power supply



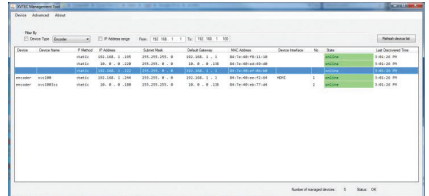
Step 5

The power led turns on after approx. 3 secs. The unit boot time is approx. 30 secs, after which the unit will respond to commands.



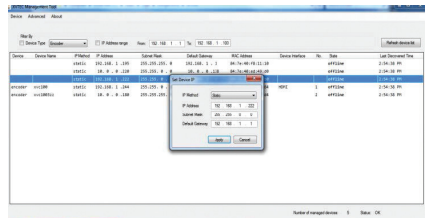
Step 6

Run the management tool. The tool discovers and lists all XVC devices on the network.



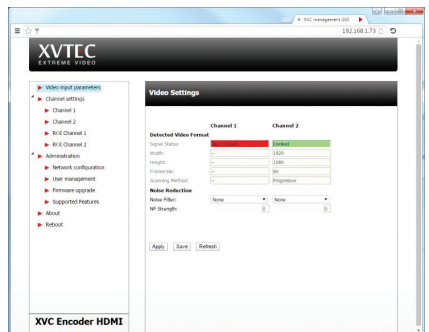
Step 7

In order to start working with the unit, the IP should be set to match your network configuration. In the management tool, right click a unit and select Set IP. Set the IP parameters (STATIC/DHCP) and the rest of the network parameters based on your network settings. Press Apply



Step 8

In the management tool, double click a unit in order to launch the web browser. A verification pop-up will appear. The defaults are:
a. User name **admin**
b. password **admin**
The main page of the XVC encoder/decoder will appear.



Step 9

To start streaming please refer to the user guide for the next steps. Download the user guide from:

https://www.xvtec.com/wp-content/downloads/XVC_HDMI/XVC-OIG.pdf